



The White Orchard, Back Lane, Bomere Heath, Shrewsbury, SY4 3PL
£1,600 Per Month



The White Orchard, Back Lane, Bomere Heath, Shrewsbury, SY4 3PL

£1,600 Per Month

A spacious four bedroom detached house located in the village of Bomere Heath. Benefitting from a flat, laid lawn garden with patio to the rear and an internal arrangement which accommodates comfortable family living. Includes a garage and brick lean-to store.

Available from: 01/05/25

Description

Comprising: Entrance hall, storage cupboard, lounge with log burner and doors to rear garden, kitchen/breakfast room with integrated dishwasher and under-counter fridge, gas range cooker, door to rear garden, utility/boot room with space for appliances, family room with log burner. The upstairs is split in to two 'wings', with stairs from the utility to the family bathroom and two double bedrooms and stairs from the entrance hall to the master bedroom, en-suite and single bedroom/study. Garage, driveway parking with EV charger. Gas central heating. Double glazing. Large garden to the rear. EPC D.

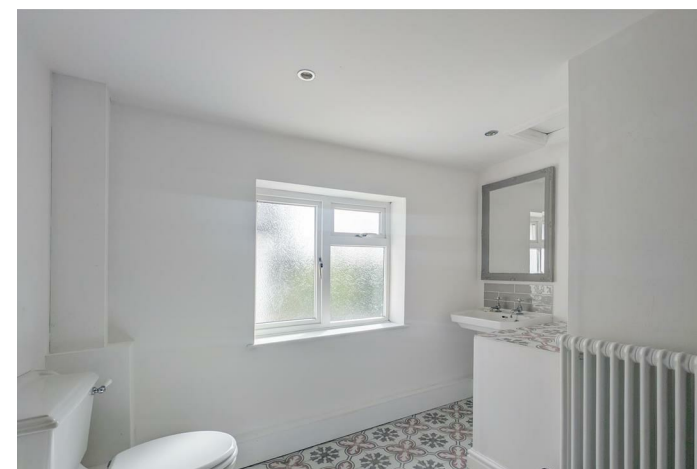


Unfurnished

Council Tax Band: E

Available: 1st May 2025

EPC: D



Floor Plans



Total area approx. 1579.9 sq. feet
Illustration For Identification Purposes Only Not To Scale.
Plan produced using PlanUp.

These particulars, whilst believed to be accurate are set out as a general outline only for guidance and do not constitute any part of an offer or contract. Intending purchasers should not rely on them as statements of representation of fact, but must satisfy themselves by inspection or otherwise as to their accuracy. No person in this firm's employment has the authority to make or give any representation or warranty in respect of the property.